



## PRODUCT RANGE **OVERVIEW**

### FEATURES:

PLASTIC ENCLOSURES  
SENSORS & CORDSETS

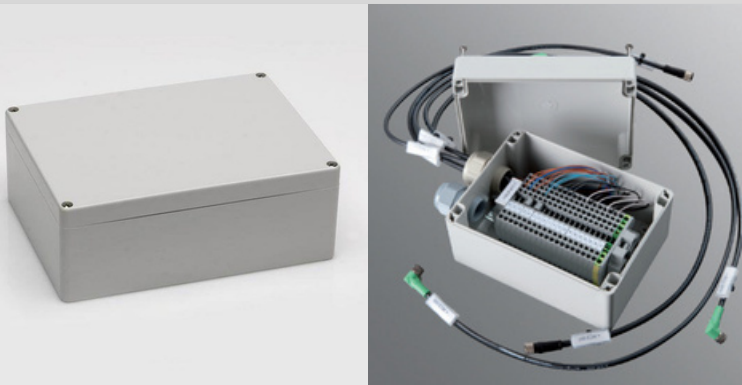
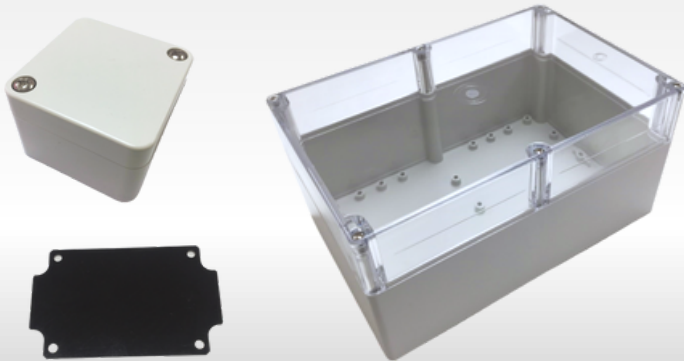
1

LIMIT SWITCHES  
SAFETY DEVICES

2

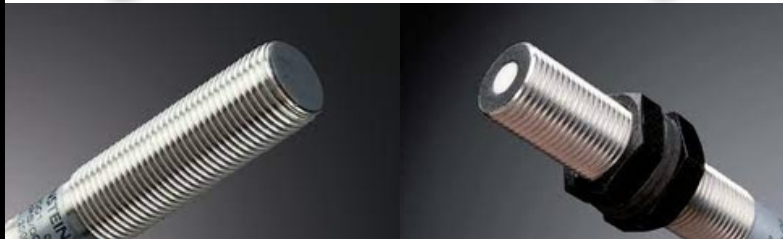
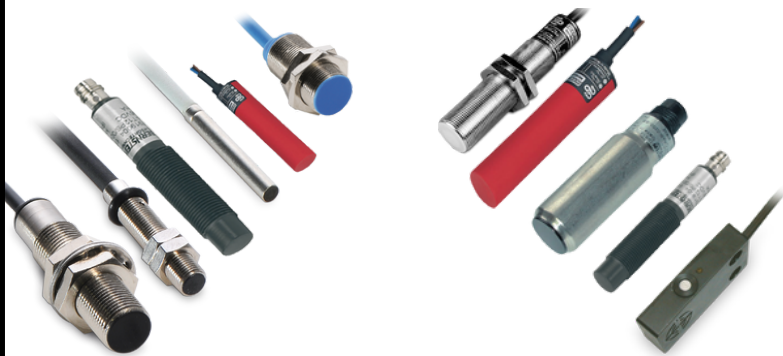
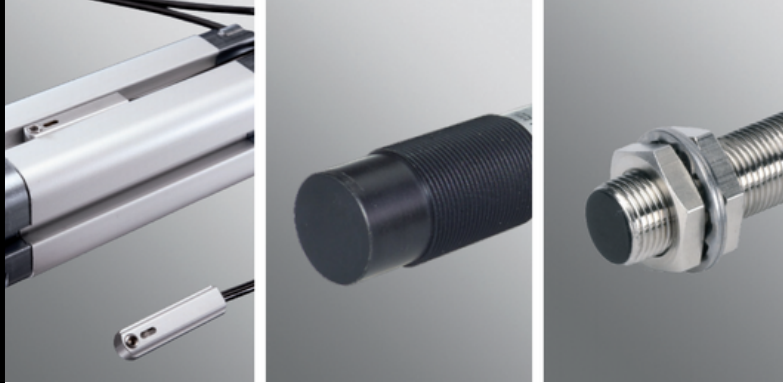
FOOT SWITCHES

3



## PLASTIC ENCLOSURES

- Available in ABS and Polycarbonate
- Protection class IP66
- UL & CSA approved
- Enclosure temperature range:
  - 40°C to +120°C (Polycarbonate)
  - 40°C to +80°C (ABS)
- Clear Polycarbonate lid and solid lids
- Standard colour: Light Grey (RAL 7035)
- PUR seal
- Stainless steel quarter turn lid screws
- Mounting bosses in base of enclosure for built-in components (mounting rails etc.)
- Polycarbonate version offers specific advantages in terms of impact strength, UV resistance and operating temperature range



## SENSORS & CORDSETS

- Sensors conform to EN 60947-5-2
- Sensors protection class: IP65/67
- Sensors temperature range -25 °C to +70 °C
- PNP and NPN versions available
- N/O and N/C contact versions available
- Flush and non-flush mountable options

### Our range covers:

- Inductive sensors
- Capacitive sensors
- Magnetic sensors

### Cordset Connectors

- Connectors M8x1 and M12x1 with moulded connection cable
- Straight and angled versions
- 3-wire version

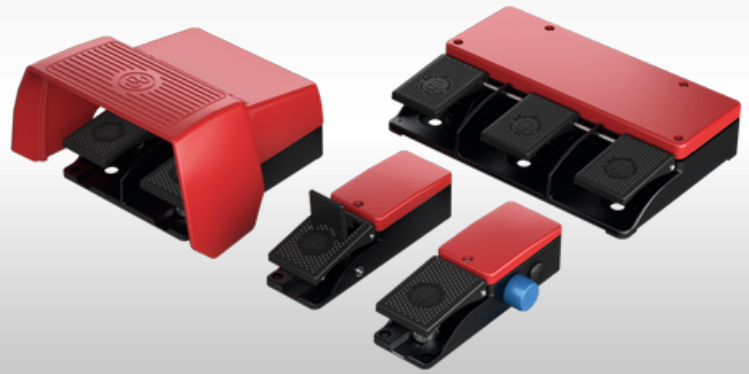


## LIMIT SWITCHES

- Available in metal or plastic bodies with a variety of sizes to suit confined spaces
- Wide range of metal and plastic actuators
- Slow and snap-action contacts
- Protection class IP65/67
- Compatible with safety relays
- Plastic limit switches, insulation protection
- Plastic bodies are chemical resistant and self-extinguishing
- Metal limit switches, high mechanical loads

## SAFETY DEVICES

- Our range covers: Safety switches, Door switches, Hinge switches, Pull rope switches and Safety relays
- The safety relays are used to reliably evaluate signals, such as those generated by the various switches
- The hinge switches come in stainless steel and are IP67 rated for the SHS series and IP69K rated for the SHS3 series
- Safety position switches with a guard locking function ensures that safety gates, doors and other protective guards remain closed for as long as a hazardous situation exists



## FOOT SWITCHES

- Metal bodied foot switch range uses die-cast aluminium and high grade thermoplastic
- Available with a protective shroud or unguarded
- Single, double and triple pedal foot switch options
- Latching or spring return options
- The mini foot switch range has a thermoplastic (glass fibre reinforced) foot switch body and actuator
- Protection class IP65
- Both foot switch ranges can be customized with cabling and connectors to suit the application



BRINGING YOU THE BEST BRANDS:



**Electrical Importing Company Limited**

(09) 634 2978 | [www.eic.nz](http://www.eic.nz)

117A Captain Springs Rd, Onehunga, Auckland 1061  
PO Box 13 872, Auckland 1643, NZ